



---

H5000

---

Lower lifetime costs

**Woltmann cold water meters**

# H5000 Woltmann cold water meter

The H5000 is a Woltmann-type meter designed for measuring bulk flows of cold potable water for revenue billing in commercial or industrial applications and distribution system monitoring.

## Key features

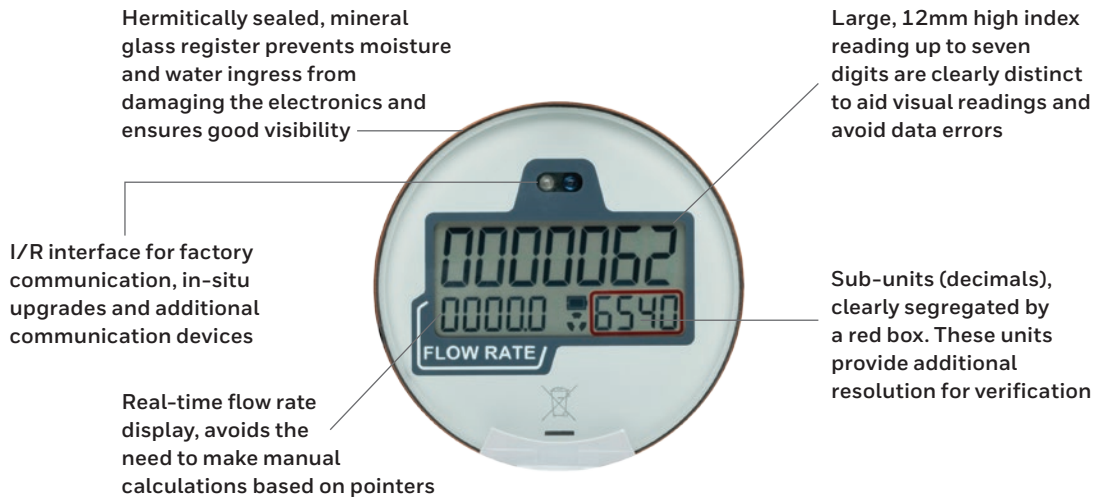
- Wide measuring range approved up to 2000:1
- Retro-fit mechanism into the H4000 body
- Uses innovative measuring technology
- Electronic register includes an integrated communications cable
- Electronic register pre-equipped for AMR/AMI with pulse, encoder, Aquabus, M - Bus, L - Bus outputs
- Value adding AMR/AMI style features such as flow rate display, data-logging, leak detection, tamper alarms and tariffing
- Approved to the latest European Directive 2014/32/EU

## H5000 applications

H5000 is the next generation of Woltmann (turbine) bulk water meter. With a range of important features, H5000 represents the very highest performance in bulk flow water metering making it ideally suited to both billing and water distribution applications. Available in seven sizes from DN40 to DN150 for flow rates between 40 l/h and 200 m<sup>3</sup>/h, the H5000 operates at temperatures up to 50°C and a maximum working pressure of 16 bar.

The H5000 meter has an advanced electronic register which includes integrated communications covering a range of industry standard outputs compatible with common AMR/AMI systems and data-logging equipment.





### H5000 measuring range

H5000 has the widest measuring range of any metering technology with a single measuring element. With low-flow that almost matches combination meters, H5000 provides a metrological performance that ensures nearly every drop is measured. With an unrivalled measuring range up to 2000:1 this also simplifies meter selection and reduces inventory.

### Ease of installation

H5000 uses the same body as the industry leading H4000 Woltmann meter, providing simple, cost effective change-out of existing meter stocks. For new meters, the H5000 is available in both ISO (WP) and DIN (WS) lengths. The meter can also be installed in any orientation without any loss of metering accuracy.

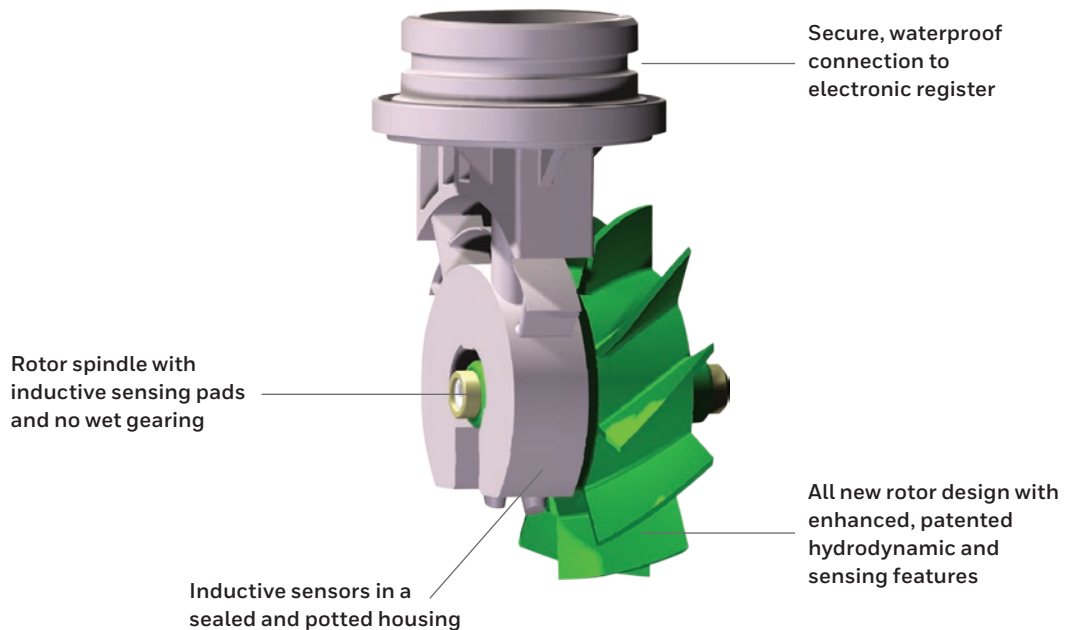
### Innovative measuring technology

H5000 features an all-new rotor design combined with long-proven sensor technology to maximise the measuring range. Just a single moving part improves sensitivity, durability and maintains longevity even at the highest flow rates.

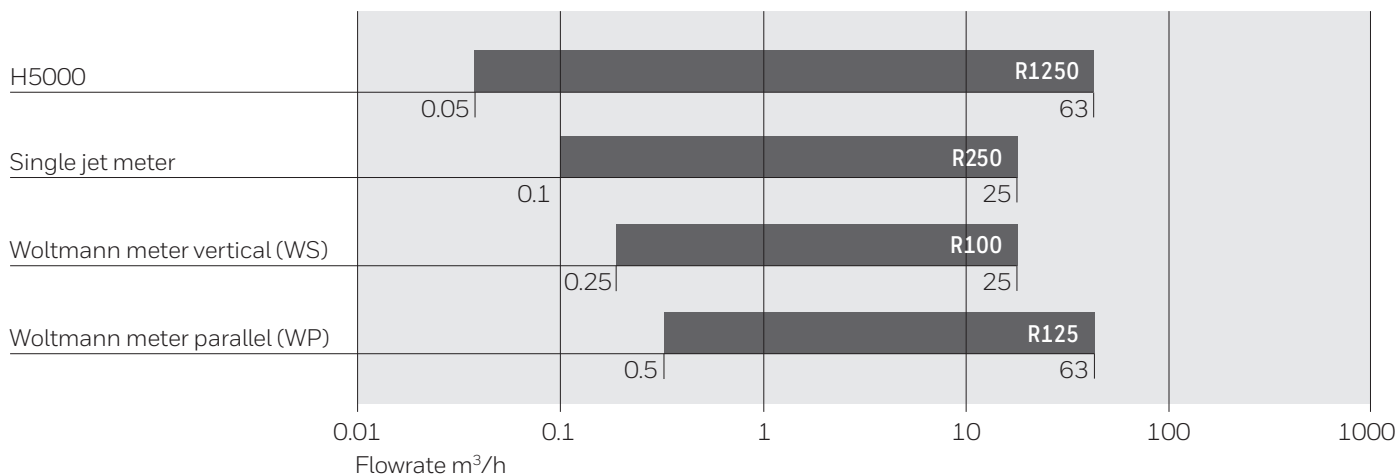
### Communications

H5000's electronic register includes an integrated communications cable (no need to purchase separate modules) with a range of industry standard outputs compatible with common AMR/AMI systems and data-logging equipment. H5000's electronic register is self powered by internal batteries with a typical lifetime of 15 years\*. The large, clear display provides valuable additional information to support a range of activities.

\*Actual battery life depends on ambient temperature and flow profile



**COMPARISON AT MEASURING RANGES (DN50)**



**For more information**

[www.elstermetering.com](http://www.elstermetering.com)

**Elster Water Metering Ltd**

130 Camford Way  
 Sundon Park, Luton  
 Bedfordshire, LU3 3AN  
 United Kingdom  
 T +44 1582 846400  
 F +44 1582 564728  
[water.metering@elster.com](mailto:water.metering@elster.com)

All rights reserved. The company's policy is one of continuous product improvement and the right is reserved to modify the specifications contained herein without notice. These products have been manufactured with current technology and in accordance with the applicable referenced standards.

Lit Ref: 8516D42108  
 © 2017 Honeywell International Inc.

