

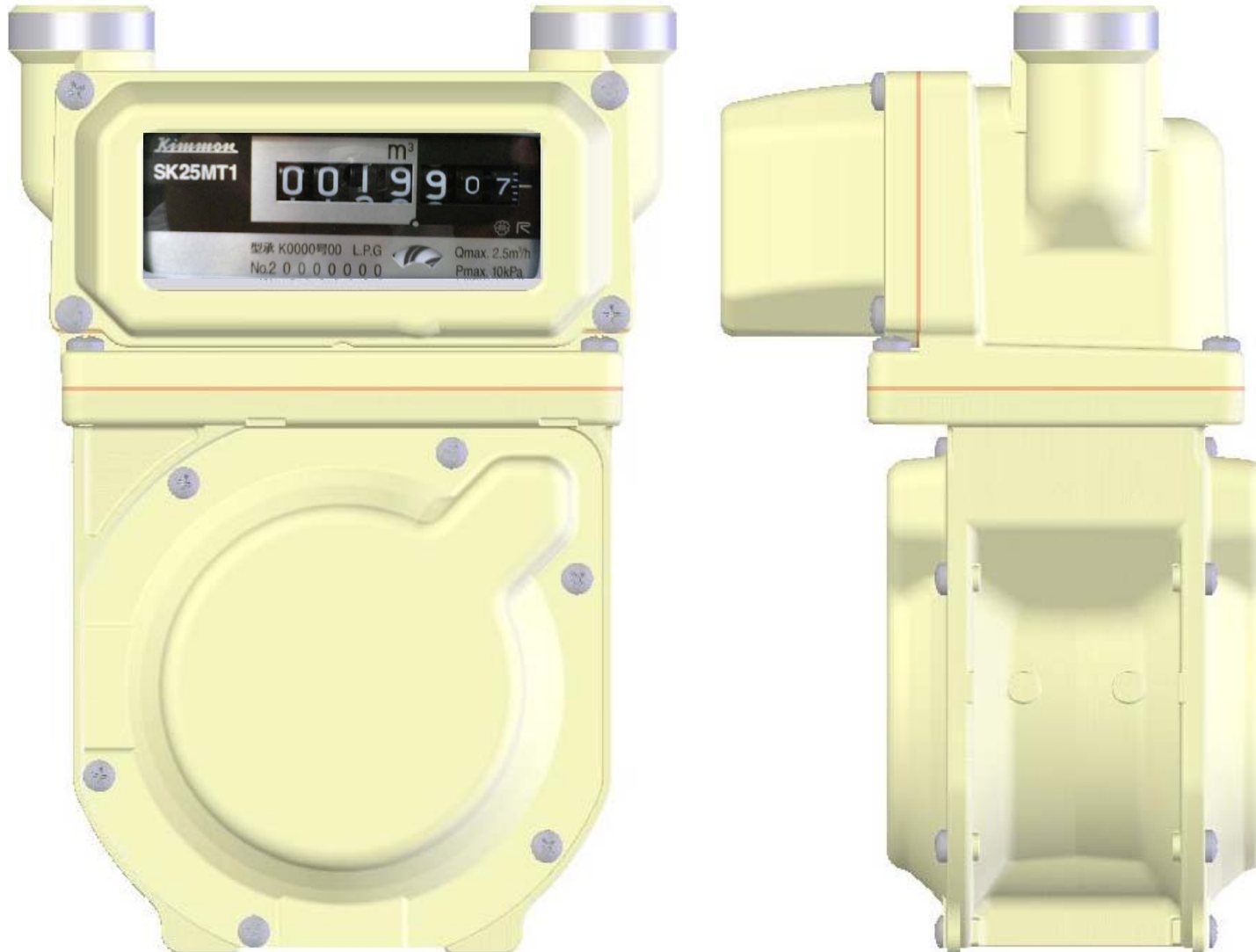
External view 1

azbil



External view 2

azbil



Design specification 1



	New	Old
Max. flow rate	2.5m³/h	
Max. working pressure	10kPa	
Pressure Loss (air)	87Pa or less	87Pa
Applicable gas type	Natural gas or LP gas	
Durability	10 years	
Working ambient temperature	-30 ~ 60deg.C	
Working Ambient humidity	85%RH or less (except dew drop)	
Installation	Indoor or outdoor	

Design specification 2



		New	Old
Dimensions	Height	236mm	
	Width	146mm	
	Depth	136mm	139mm
Weight		1.8kg (expectation)	2.3kg
Cyclic volume		0.7L/rev.	
Measurement mechanism		Symmetric (Inner wing type)	Symmetric (Outer wing type)
Valve type		Rotary valve	Fan-shape valve
Counter		Mechanical digital counter with flow checker	

Connecting unions for SK25

