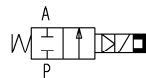
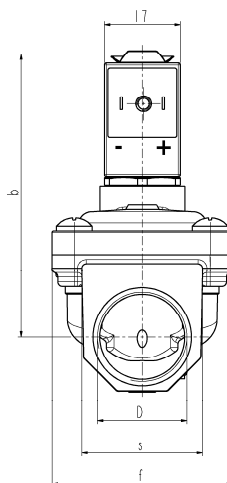
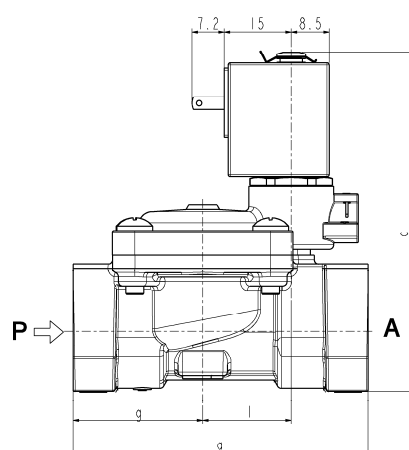




SOLENOID VALVE
2/2 - NC (Normally closed)
Pilot operated
G 3/8 ÷ G1

L182
LATCHING MODEL



D	a	b	c	f	g	l	s
G 3/8	60	60	71	40	25,5	20	22
G 1/2	66	62,5	76	40	29	20	27
G 3/4	79	66,5	83	50	35,5	24,5	33
G 1	105	79,5	100,5	71	46	28	42

► **GENERAL FEATURES**

Diaphragm valve, pilot operated, having full orifice.
Suitable to shut off liquid and gaseous fluids (verify the compatibility of fluid with materials in contact).

► **TECHNICAL FEATURES**

Maximum allowable pressure (PS)

16 bar

Response times

Opening time (ms)

Closing time (ms)

Fluid temperature

Max viscosity

3/8	1/2	3/4
70	70	70
670	600	500

-10°C +90°C (NBR)
-10°C +140°C (EPDM)
5°E (~37 cStokes or mm²/s)

► **MATERIALS IN CONTACT WITH FLUID**

Body

Brass

Sealing

NBR or EPDM

Internal components

Brass and stainless steel

Seat

Brass

Guide assembly

Stainless steel

► **COIL**

Duty

Latching model, polarized type, operating with impulses

Minimum energizing time

20ms

Encapsulation material

PP-V0 (self-extinguishing-polypropylene)

Coil insulation class

A (105°C)

Ambient temperature

-10°C +60°C

Electric connections

DIN 46340 - 3 poles micro plug connector

Protection degree

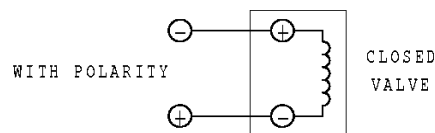
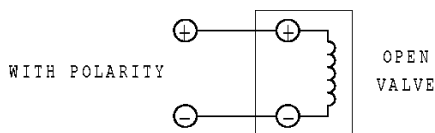
IP 65 (EN 60529) with micro plug connector

Voltages

DC

6-12V (+10% -10%)

(Other voltages on request)



Port size ISO 228	Orifice size (mm)	Differential pressure (bar)						Kv (m³/h)	Series and type		Power absorption			Sealings	Notes	Weight (kg)				
		Δp min	Δp max				AC (VA)				DC (W)									
			Gases		Liquids				Inrush	Holding										
			AC	DC	AC	DC														
G 3/8	13,5	0,35	-	8	-	8	2,5	L182D61	Z070D	-	-	2	EPDM	1	0,300					
G1/2	13,5						3,8								0,360					
G 3/4	18						5								0,500					
G3/8	13,5						L182B61	-						-	2	NBR	-	0,300		
G 1/2	13,5																		3,8	0,360
G 3/4	18																		5	0,500
G 1	24												11						1,060	

► **NOTES**

- Sealings : NBR = Nitrile-butylene elastomer. EPDM = Ethylene-propylene elastomer (WRAS/KTW certified compound)

- The operation with gaseous media, at high pressure without any outlet restriction, can reduce the diaphragm life.

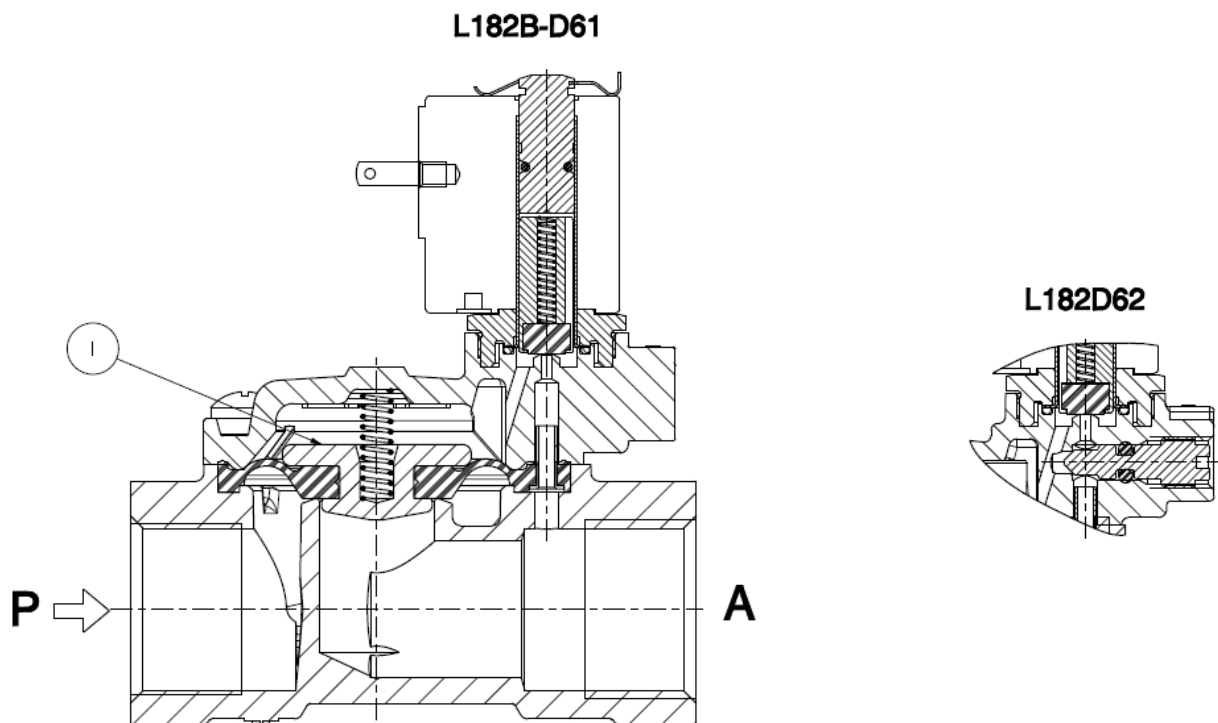
1 - **WRAS** certified solenoid valve (certificate n. 1411048).

2 - Version with manual override, available on request

L182

LATCHING MODEL

► SPARE PARTS



Kit description

Diaphragm assembly

Kit P.N.

Consisting of:

L182D61	G3/8	2844306R
	G1/2	2844306R
	G3/4	2299708R
L182D62	G3/4	2299708R
L182B61	G3/8	2844302R
	G1/2	2844302R
	G3/4	2299701R
	G 1	2380101R

Diaphragm assembly pos. 1

► MOUNTING

- Solenoid valve can be mounted in any position; vertical with coil upwards preferred.

THE VALIDITY OF REPORTED DATA IS REFERRED TO THE DATE OF ISSUE. POSSIBLE UPDATES ARE AVAILABLE ON REQUEST.