

Next day  
delivery

Best prices in  
the industry

Full range  
now in stock

5 year  
warranty

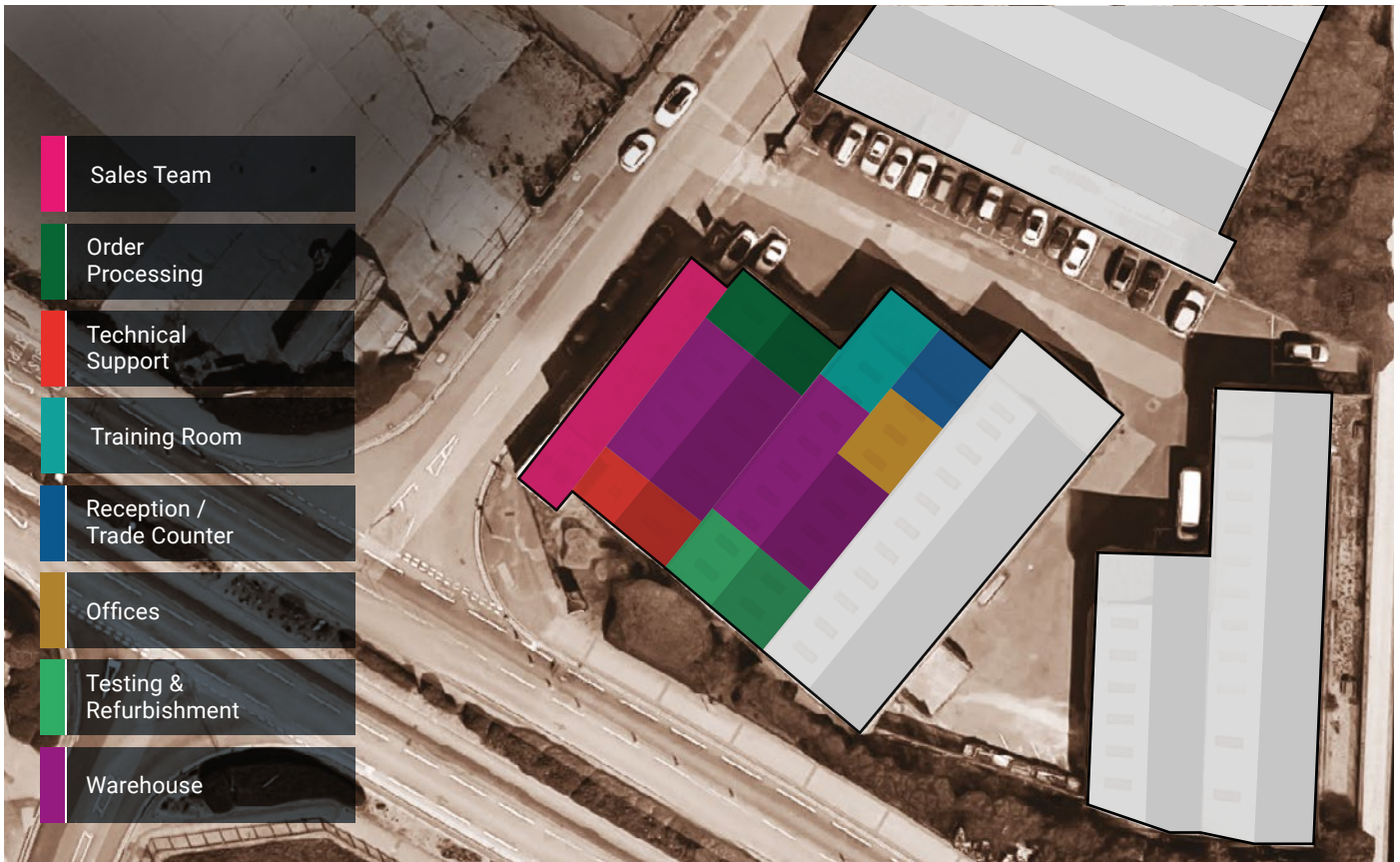
# MWA'S TOP FIVE METERS

TOP  
5



MWA TECHNOLOGY





All your metering needs in one central location

# ABOUT MWA

With many years of industry experience, we pride ourselves on being able to provide you with detailed technical support, assisting you with your choice of the right product for the right metering application.

MWA Technology has spent many years searching the metering world and has developed a comprehensive meter range for the commercial, industrial and domestic markets.

We have developed strong relationships with local distributors as they are able to rely on us to provide, not only them, but also their customers with the very best technical metering knowledge. We take great pride in ensuring the product we recommend will be fit for your application.



*"Customer satisfaction is the key to our success. Our staff has unparalleled technical product knowledge. This enables us to help you service your customers' metering needs with confidence."*

MATTHEW ROSE, Sales Manager

Whatever your application, we have a metering solution.





# WATER METERS

# GAS METERS

TOP 5



## AQUADIS Range

Volumetric, cold water meter available in ½" to 1½". Maximum temperature of 30°C and maximum pressure of 16 bar. WRAS and MID 2004/22/CE approved, and suitable for horizontal and vertical pipelines. Available with Pulse, M-Bus, Radio, and Wireless M-Bus outputs.



## GSD Range

Single-jet, super dry dial cold water meter available in sizes ½" and ¾", with a maximum temperature of 30°C. WRAS and MID 2004/22/CE approved, and suitable for horizontal and vertical pipelines. Available with Pulse outputs.



## V100

Volumetric, cold water meter available in sizes ½" up to 1½", with a maximum temperature of 30°C and maximum pressure of 16 bar. WRAS and MID 2004/22/CE approvals, suitable for horizontal and vertical pipelines. Available with Pulse Outputs.



## HYDRUS Range

Static ultrasonic water meter ideal for accurate measuring and recording for all applications of water supply. Metrological Class 2 and dynamic range up to R400. Compliant with MID, OIML R49 and EN14154. Mounting in any installation position. Wire M-Bus, Radio OMS, Radio / L-Bus, and Pulse interfaces available.



## GMDM-I Range

Multi-jet, super-dry dial with pre-equipped inductive modules; M-Bus wired and wireless OMS, and non-magnetic pulse output, has a magnetic transmission with 360° rotating lid. The range includes versions for cold (50°C) and hot (90°C) water. Direct reading on 5 numeric rolls.



## GALLUS

The Gallus is one of the most trusted residential gas metering devices in the world. With OIML and EN1359 compliance standards, the Gallus is factory-equipped with Itron Cyble technology to provide efficient meter reading process. The compact design means it can fit in a variety of environments.



## DELTA Range

Industrial diaphragm gas meter for secondary measurement, 1 BSPT to 200mm wafer for PN16. MID and EN1359 approved. Suitable for Natural, Propane and Butane gases, with a maximum pressure 16 mbar. Available with Pulse, M-Bus and 4-20 Ma outputs.



## CPT Range

Industrial diaphragm gas meter for secondary measurement, 1 BSPT to 200mm wafer for PN16. MID and EN1359 approved. Suitable for Natural, Propane and Butane gases, with a maximum pressure 16 mbar. Available with Pulse, M-Bus and 4-20 Ma outputs.



## CGR Range

Inline gas meter with wafer connections to suit PN16 flanges and ANSI 150 alternatives. This aluminium bodied meter, suitable for natural gas and LPG is fitted with low frequency pulse outputs as standard, takes 20 bar worth of pressure between -20°C and +60°C.



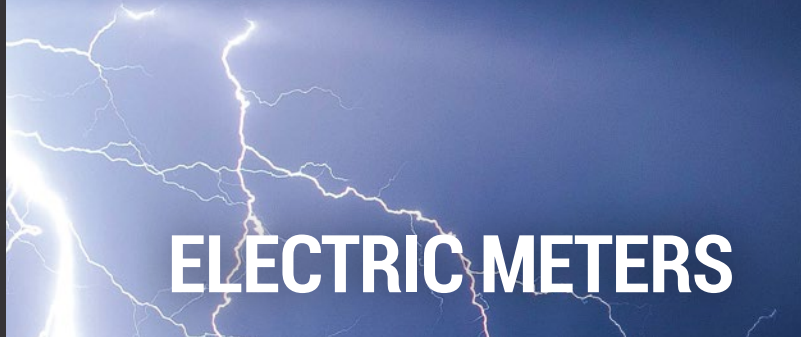
## UG Series

The UG series has great versatility for gas consumption registration with a mechanical index and electronic (incremental or absolute) encoder under one housing. The radio modules come with dedicated internal antennas, radio modules include: Wireless M-Bus and GSM/GPRS quad band.





## HEAT METERS



## ELECTRIC METERS



### CF ECHO II

Ultrasonic compact heat meter, available in ½" to 2" sizes. Maximum temperature of 130°C and max. pressure of 16 bar. EN1434 Class 2 MID approved and RHI listed. 230v AC and battery operation with temperature sensors and pockets. Available with Pulse, M-Bus, Radio, GPRS and Modbus outputs.



### AXONIC

The Axonic is a static ultrasonic flow meter, perfectly adapted to the needs of district heating and cooling applications. With a robust and reliable design, the Axonic is MID approved to 2014/32/EU and Class 2 accurate to EN1434. Installation is easy due to Itron's innovative mobile flange design.



### CF ULTRAMAXX V

Ultrasonic compact heat meter, available in ½" and ¾" sizes. Maximum temperature of 130°C and maximum pressure of 16 bar. EN1434 Class 2 MID approved and RHI listed. Battery operation with temperature sensors and pockets. Available with Pulse and M-Bus outputs.



### 774

Ultrasonic compact energy AMR Smart meter can be used for measuring the energy consumption in heating applications for billing purposes. With M-bus or wireless M-Bus communication outputs, this meter is capable of constant high-measuring rates up to 12 years battery life. MID electromagnetic Class E2.



MULTICAL® 403

### 403 / 603 Range

Ultrasonic heat meters 403 – 603, are available in ½" to 2" sizes. Maximum temperature of 130°C and maximum pressure of 16 bar. EN1434 Class 2 MID approved and RHI listed. 24v AC, 230v AC and battery operation with temperature sensors and pockets. Available with Pulse, M-Bus and Wireless M-Bus outputs.



### A100C

Single phase electricity compact meter with accuracy Class 1 or Class 2. MID EN50470-32004/22/CE approved. Supplied with Pulse outputs.



### A1100C

Three phase electricity meter; 230v AC, 20 to 100 Amps. MID EN50470-32004/22/CE, Class A or Class B, Accuracy Class 1 EN61036 & EN60253-21 approvals. Directly operated and supplied with Pulse outputs.



### CUBE 300

Three phase electricity meter with 400/230v AC, and CT operated. EN61010-1 approved, Accuracy Class 1 EN61036 & EN60253-21. This meter is supplied with Pulse and Modbus outputs.



### CUBE 350

Three phase electricity meter with 480/277v AC, and CT operated. EN61010-1 approved, Accuracy Class 1 EN60253-21. This meter is supplied with Pulse outputs.



### CUBE 400

Multifunction electricity meter, with 400/230v AC and CT operated. EN61010-1 approved, and accuracy Class 1 EN62053-21. Supplied with Pulse and Modbus outputs.







# TECHNICAL SUPPORT

As well as on-site support, we can help you with the most common technical meter issues by telephone or by email.

Whether you are looking for advice on the most appropriate meter, want to ask about compliance, cost components of metering and advanced metering systems or need installation advice, we are here to help.



# ON-SITE SUPPORT

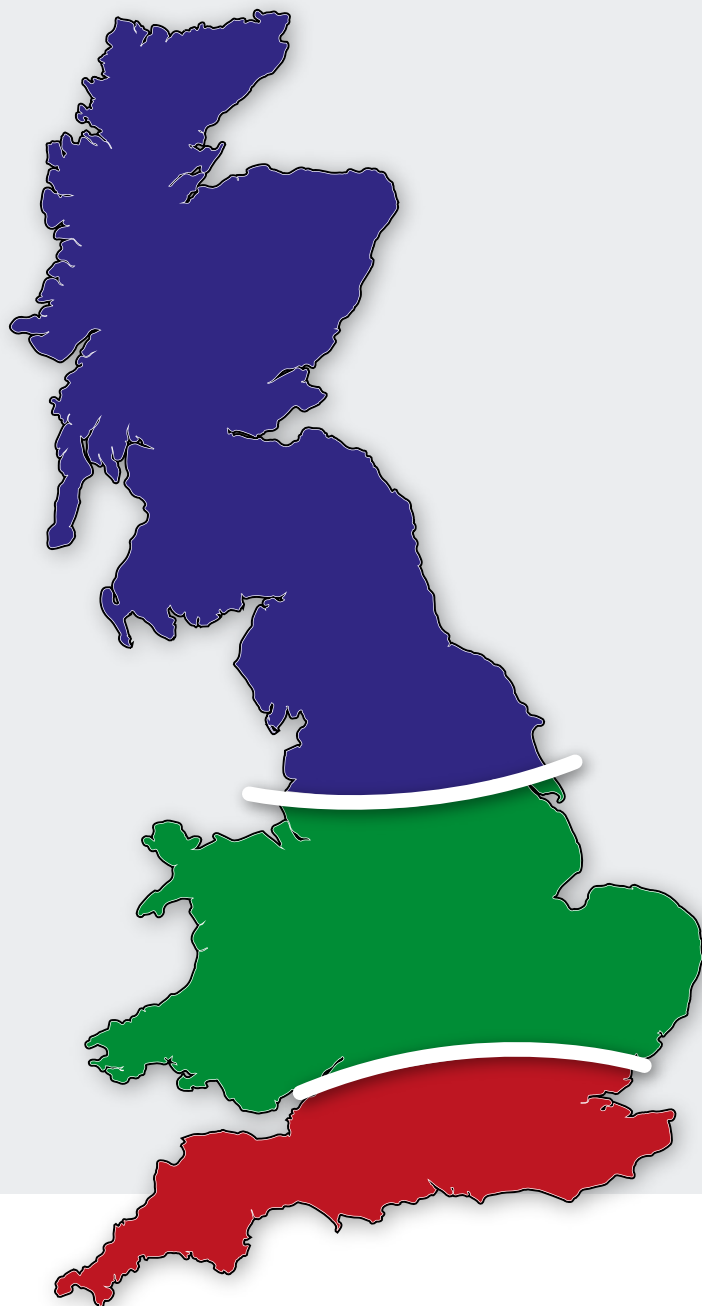
A technical support person is available to work in partnership with you for on-site training, technical issues and project development, whether on site or at your client's location. We will provide you with feedback and advice on a variety of products, services and ideas.

**Tell us what you need and let us do the rest.**



# UK-WIDE COVERAGE

Based in Aston, Birmingham, we are ideally located to access the motorway network to allow fast and efficient delivery throughout the UK. Plus, our sales representatives up and down the country are here to support you.



## 'In the office'



**Teyon Atterbury**  
Account Manager  
teyonatterbury@mwatechnology.com



**Laura Rose**  
Account Manager  
laurarose@mwatechnology.com



**Kim Pritchard**  
Account Manager  
kimpritchard@mwatechnology.com



**Deena Roberts**  
Account Manager  
deenaroberts@mwatechnology.com



**Andrew Smith**  
Technical Estimator  
andrewsmith@mwatechnology.com



**Dennis Hiron**  
Technical Director  
dennishiron@mwatechnology.com

## 'On the road'



**Matthew Rose**  
Sales Manager  
matthewrose@mwatechnology.com  
07880 340215



**James McCann**  
New Business Development  
jamesmccann@mwatechnology.com  
07720 300125



**David Sivertsen**  
New Business Development  
davidzivertsen@mwatechnology.com  
07384 814135



**Steve Morris**  
Onsite Support Service  
stevemorris@mwatechnology.com  
07702 847061



**Andrew Kelly**  
Technical Support  
andrewkelly@mwatechnology.com

**mwa TECHNOLOGY** 



Offices & Workshop  
Units 1 & 2 Wharton Street Industrial Estate,  
Wharton Street, Birmingham, West Midlands B7 5TR  
0121 327 7771  
mwatechnology.com

